



**All Points Broadband

NSVRC Quarterly Update**

April 16, 2026

Broadband Project Overall Status

- Initial service activation
 - Primary network cabinet constructed with power in all counties
 - Upstream Internet backhaul pending in Fauquier, Page, Warren, Clarke
 - Customer drops / installs ongoing in Augusta, Rockingham, Frederick, Rappahannock
 - 639 of 3,812 serviceable locations have created account, pending drop, or active service
- Dominion middle mile construction approximately 95% complete
- REC middle mile access complete into Fauquier, Warren, Rappahannock
- Permitting
 - APB increased VDOT bonding capacity by \$15M to meet demand
 - Pole make-ready construction underway with all pole owners
 - Expect substantial completion in September
- Construction restoration request: Customer-support@allpointsbroadband.com
 - Include full contact information, pictures (if applicable), approximate date of construction activities, and brief description of issue

Broadband Project Overall Status

- Active last-mile construction in all counties; targeting EOY completion
 - Significant inclement weather contributed to 32-mile shortfall of Q1 target, will require 1 or 2 additional crews in multiple counties in Q3/Q4
 - Crew count ramping up through Q2:

	APR	MAY	JUN	JUL	AUG	SEP	OCT	NOV	DEC
Augusta	4	4	4	6	6	6	3	1	0
Clarke	3	5	6	4	5	5	5	4	0
Fauquier	8	12	12	13	15	15	15	15	15
Frederick	5	5	10	6	9	6	7	6	4
Page	4	4	5	7	8	8	7	7	7
Rappahannock	4	4	4	7	6	4	4	4	0
Rockingham	8	8	8	8	4	4	4	6	4
Warren	3	3	1	3	1	1	4	4	4
Total Construction	39	45	50	54	54	49	49	47	34
Total Make-Ready	4	7	12	13	11	8			

Preregister or Sign up at [APBfiber.com](https://apbfiber.com)

- <https://allpointsbroadband.com/construction>
- ~3500 locations in pre-order marketing phase
- \$300 account credit split between active and referral customers available during pre-order
- Improved service levels to roll out in June



The wait for fiber internet is *finally* over!

Join at [APBfiber.com/install](https://apbfiber.com/install)

High-speed fiber internet is now available in your area.

Ready. Set. **Stream.**

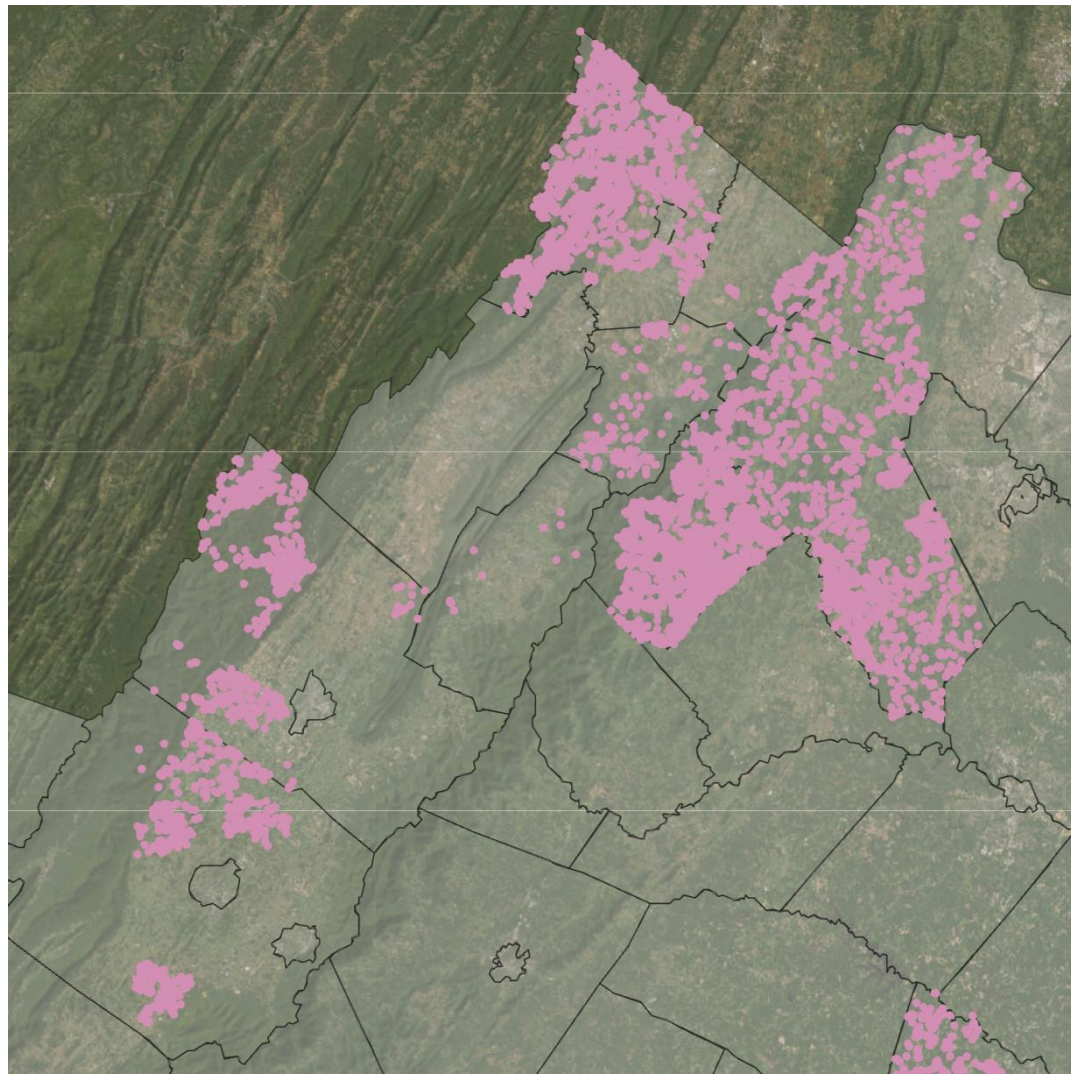
 **ALL POINTS BROADBAND**

The advertisement features a family of four (a man, a woman, and two children) sitting on a couch and looking at a laptop. The background is a solid blue color with a white starburst graphic behind the main headline. The text is in white and yellow, and the logo is in blue and white.

BEAD Update

- DHCD-ISP contract public comment period ended April 10th
- Pre-contracting documentation underway
- Environmental and historic preservation questionnaire completed & under review
- All counties with significant FTTH provisional awards, although not necessarily APB
- Anticipate construction to begin in January, 2027, with target completion end of 2027

- Multiple options through VATI FY25 to serve remaining locations without existing obligation





Thank You

Adding or Modifying Locations through the National Broadband Map (https://broadbandmap.fcc.gov/)

Modify: Click on map icon for your location to begin “Location Challenge” process

The screenshot shows the FCC National Broadband Map interface. At the top, there is a navigation bar with the FCC logo and the text 'FCC National Broadband Map'. Below this is a menu with 'Home', 'Location Summary', 'Provider Detail', 'Area Summary', 'Data Download', 'About', and 'Broadband Funding Map'. The main content area is divided into a map on the left and a data panel on the right. The map shows an aerial view of a rural area with roads labeled 'Old Chapel Rd' and 'Bishop Meade Rd'. A search bar at the top of the map contains the address '3433 BISHOP MEADE RD BOYCE, VA 22620'. A blue location pin is placed on a building, and a tooltip above it displays the coordinates '39.104945, -78.015959' and a button labeled 'Add a New Location'. The data panel on the right has tabs for 'Fixed Broadband' and 'Mobile Broadband'. Under 'Fixed Broadband', there is a 'Location Challenge' button. Below this, the 'Selected Location' is listed as '3433 BISHOP MEADE RD BOYCE, VA 22620' with a status of 'Served' and 'Residential | Unit Count: 1'. A 'Broadband Availability' table is also present, showing providers like 'All Points Broadband', 'HughesNet', 'Starlink', and 'Viasat, Inc.' with their respective technologies and speeds. A red arrow points from the 'Location Challenge' button in the data panel to the 'Add a New Location' button on the map.

Provider	Technology	Down (Mbps)	Up (Mbps)	Chall.
All Points Broadband	Unlicensed Fixed Wireless	10	1	
HughesNet	GSO Satellite	100	5	
Starlink	NGSO Satellite	220	25	
Viasat, Inc.	GSO Satellite	150	3	
Business-only Service				
Viasat, Inc.	GSO Satellite	150	4	

Add: Navigate to your location and click on screen above building to begin “Add a New Location” process